

GRAIN BAGGER EGSO 550

OMBU

0800 888 OMBU
WWW.MAQUINASOMBU.COM.AR



Agriculture Machines Ombú S.A. / Trailers Ombú S.A.
Street 10 N 808 - PC 2505
Las Parejas, Santa Fe - Argentina.
Phone: (+54 9) 03471 471027
info@maquinasombu.com.ar



EMPOWERING FUTURE

OMBU
Agricultural Machinery & Trailers

Durability and simplicity that boost your performance.



Large-capacity hopper with folding lids and load level window.



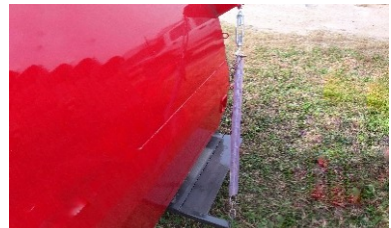
Hydraulic disc brake system.



Manual brake pump.



Hydraulic system for bag lifting.



Adjustable lower platform with folding mechanism for transport.



Wheel chocks to secure the machine when stationary.



PTO shaft with protective cover.



Folding floor for cleaning.



7.50-16 off-road tires.



Adjustable articulated chassis and drawbar.



Drawbar jack.



Machine in working position with rear support legs for tractor removal

Technical specifications



High-capacity hopper with door system that allows the machine to advance 3 meters without moving the self-dumping hopper, preventing clutch damage in the tractor.

Includes a load level window to monitor fill status.

Hydraulic oil disc brakes operated by a manual pump on both wheels.

7.50 R 16 off-road tires.

Bag lifting system operated by a folding hydraulic cylinder for both bagging and transport.

In order to ensure the bag is held in place and gradually released, it is secured with elastic cords at the upper end of the machine.

A bag support base is placed at the bottom part, where the bag rests and gradually slides outward as it fills with grain. This bottom section includes a folding mechanism for transport.

Grain fed through the hopper is transferred to the bagfilling auger. This auger is armored with a cemented hardening layer to enhance durability, and it is supported by a robust external bearing and an internal oscillating bearing.

Power is delivered through a PTO (Power Take-Off) shaft with ASA 80 chain reduction, built for high durability.

The PTO requires 540 rpm from the tractor and a 6-spline shaft.

Equipped with an overload protection system using shear bolts on the PTO.

Tires are available as optional equipment.

This machine packs the grain it receives from the hopper into a 9-foot diameter heavy-duty plastic bag. As the grain is packed, the machine and tractor move forward, propelled by the pressure of the grain itself. Each bag can hold approximately 200 tons of grain, with a working capacity of 550 t/h.

Track width: 2.10 m; total working width: 3 m. The transition from work to transport position is performed by actuating the hydraulic cylinder to raise the chassis. This system also adjusts the working height depending on grain RH (relative humidity).

Machine type	Tow-behind machine with reinforced chassis and tilting axle, articulated drawbar to maintain horizontal position.
Working capacity (kg/h)	550,000
Machine drive	Tractor PTO, 6-spline, 540 rpm
Safety security	Shear bolt on PTO.
Minimum tractor power (hp)	75 hp
Bag diameter (feet – meters)	9'- 2,74 m.
Transport-to-working position change	Via hydraulic actuator.
Track width (m)	2,1
Working width (m)	3 m
Working transport (m)	3 m
Grain intake hopper	Folding doors with gas cylinders 1.75 m³ capacity
Extended hopper lateral length (m)	3 m
Transmissions	ASA 80 chains and sprockets.
Bag-filling auger	Cement-hardened steel 480 mm.
Discharge tube cleaning	Inspection cover on lower section
Hydraulic system required	Tractor with hydraulic valve – minimum pressure 110 bar
Wheel size	2 × 7.50-16 off-road tires
Empty weight (kg)	1,600 kg
Optional features	Tires / Rear stabilizing support legs